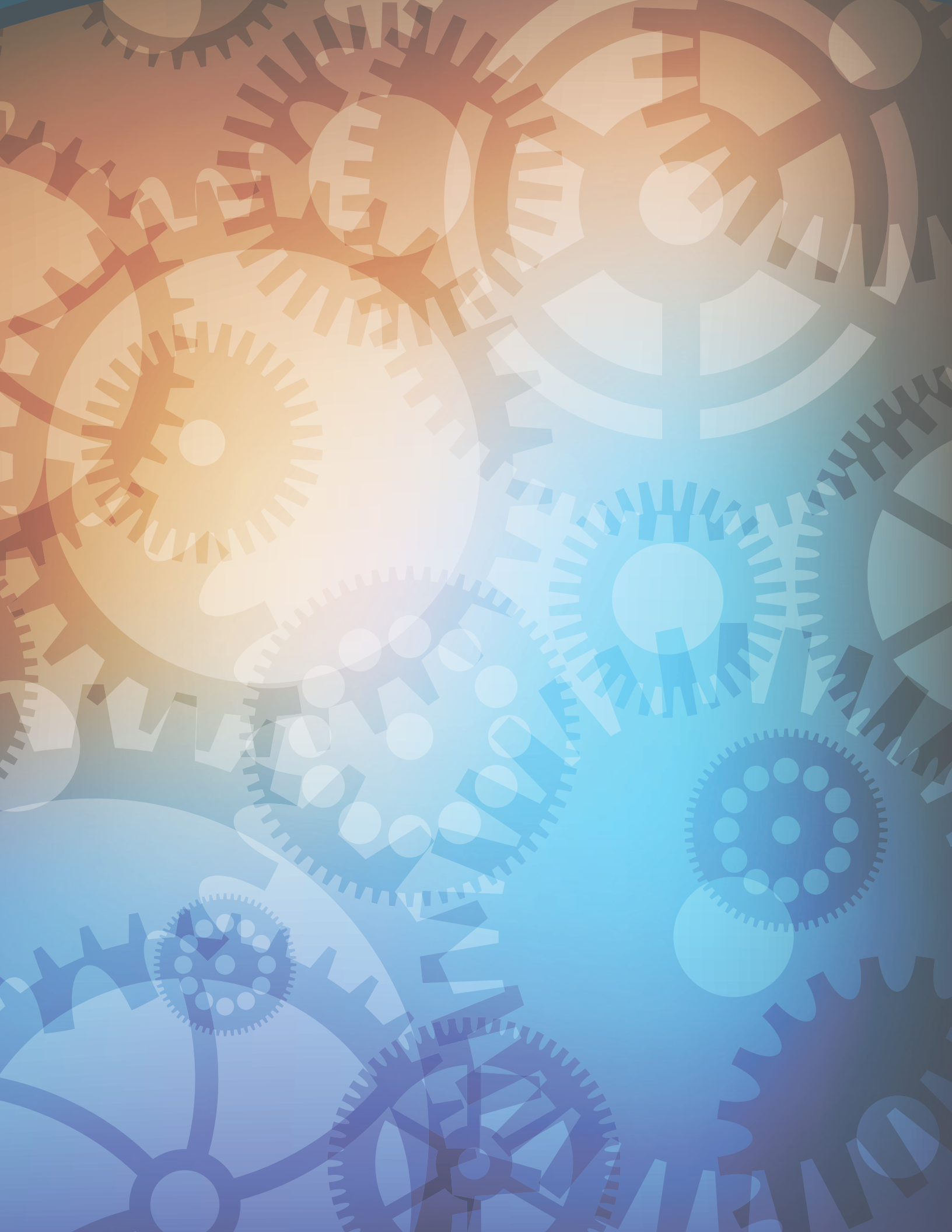


The Research University Civic Engagement Network



2019 Meeting
at the University of Delaware

February 13-15, 2019
Newark, Delaware



Dear TRUCEN members,

It is a pleasure to welcome you to the 2019 meeting of The Research University Civic Engagement Network. Every year, this gathering is a highlight: I learn a great deal and interact with people doing extraordinary work in the context of complex institutions that offer distinctive opportunities. I am particularly pleased to be participating in this year's TRUCEN meeting at the University of Delaware, an institution that has made a major commitment to civic and community engagement and to publicly engaged scholarship.

Appropriately, the hosts of this year's conference have chosen to highlight engaged scholarship as a central theme for our conversations. Specific attention in the program will be given to providing space to discuss and share programming strategies around the essential building blocks of engaged scholarship: faculty support, institutional commitment, student programming, and community partnerships.

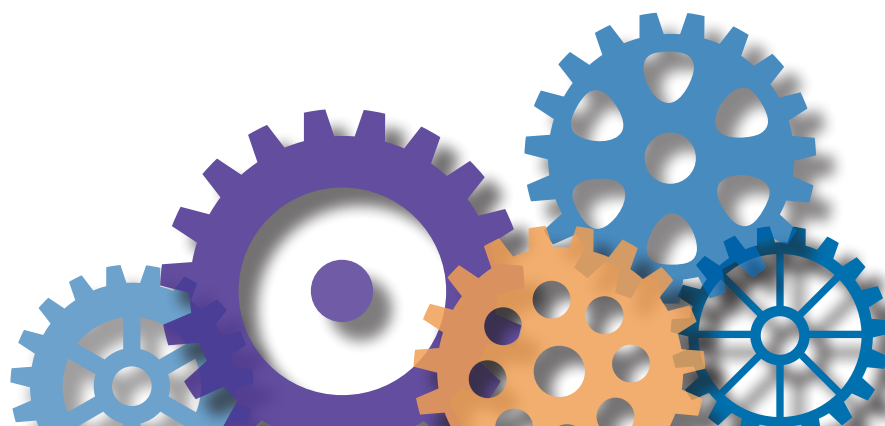
I hope that you leave this conference with new ideas and perspectives to help you advance the work of engaged scholarship on your own campus. I hope as well that you leave with new or renewed relationships that will continue to connect you to perspectives that challenge and inform your own. Finally, I hope that you will return home with a refreshed sense of purpose as you continue to call on your own institution to achieve its public purposes in the way it pursues its core activities of scholarship and teaching.

I also ask you to do one thing on behalf of TRUCEN. While you are here, please focus a small fraction of your brain power on imagining what kind of continuing, collective work around these core themes you might wish to undertake, as a network, to advance our common cause. This could take the form of developing and disseminating model programs, formulating new tools or resources, or planning virtual learning events that might give energy to institutionalization efforts across a range of research institutions.

I thank you for taking the time and making the effort to join this discussion. I look forward to participating in it with you. And I am always open to your suggestions about how we can make TRUCEN stronger, more effective, and more fun. Let's get started.

With best wishes,

Andrew J. Seligsohn, PhD
President
Campus Compact





AGENDA

WEDNESDAY, FEBRUARY 13 *(Courtyard Marriott)*

- 4:00 – 5:30 p.m. **Registration**
- 5:30 – 6:00 p.m. **Welcome Reception**
- 6:00 – 7:00 p.m. **Dinner**
- Welcome and Introductions**
- Lynnette Overby**
Deputy Director, Community Engagement Initiative, University of Delaware
- Engaged Scholarship**
- Robin Morgan**
Provost, University of Delaware
- 7:00 – 8:00 p.m. *Sharing: Engaged Scholarship Challenges*

THURSDAY, FEBRUARY 14 *(Courtyard Marriott, Bayard Sharp Hall, Roselle Center for the Arts)*

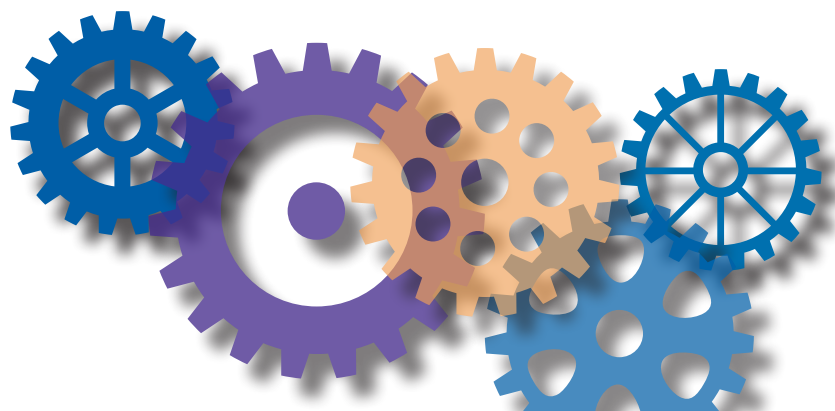
- 8:00 – 9:00 a.m. **Breakfast**
- 9:00 – 9:30 a.m. **Campus Compact Welcome and Update**
- Andrew Seligsohn**
President, Campus Compact
- 9:30 – 10:30 a.m. **Panel Discussion with Q&A:**
Defining and Supporting Engaged Scholarship
- Lynn Blanchard**
Director, Carolina Center for Public Service,
University of North Carolina at Chapel Hill
- Mark Rieger**
Dean and Director
College of Agriculture and Natural Resources, University of Delaware
- John Ernest**
Chair, English, University of Delaware
- Lynnette Overby**
Deputy Director, Community Engagement Initiative, University of Delaware

10:30 – 10:40 a.m.	Break
10:40 – 11:45 a.m.	<i>Sharing: How can TRUCEN provide resources and programming that will support the work of faculty engaged scholarship?</i>
11:45 – 12:45 p.m.	Lunch
12:45 – 1:45 p.m.	Panel Discussion with Q&A: Institutional Commitment at UD Martha Buell Professor, Human Development and Family Sciences; Director, Delaware Institute for Excellence in Early Childhood; Past President, Faculty Senate, University of Delaware Heather Kelly Director of Institutional Research, University of Delaware Michael Vaughan Associate Dean, College of Engineering, University of Delaware George Irvine Interim Associate Vice Provost, Division of Professional and Continuing Studies, University of Delaware
1:45 – 2:45 p.m.	<i>Sharing: How can TRUCEN promote institutional support of engaged scholarship?</i>
2:45 – 3:00 p.m.	Break
3:00 – 4:15 p.m.	Panel Discussion: Student Focused Programming/Transcript Notations Renee Brown Director, Center for Service Learning and Civic Engagement, Michigan State University Lisa Chambers Associate Director, Morgridge Center for Public Service, University of Wisconsin Susan Serra Assistant Director of Service Learning, University of Delaware Luke Terra Associate Director, Haas Center for Public Service, Stanford University <i>Sharing: How can TRUCEN support student engaged scholarship?</i>
4:15 – 5:00 p.m.	<i>Sharing: Ideas for outcomes session on Friday</i>
5:00 – 5:30 p.m.	Shuttles to Bayard Sharp

- 5:30 – 7:00 p.m. **Reception and Dinner, Bayard Sharp Hall**
- Introduction to Knowledge Based Partnerships**
Lynnette Overby
Deputy Director, Community Engagement Initiative,
University of Delaware
- 7:00 – 7:30 p.m. **Walk or Shuttle to Gore Recital Hall, Roselle Center for the Arts**
- 7:30 – 8:30 p.m. **Campus/Community Collaborations in Performance**
Hosted by the Partnership for Arts and Culture
Gore Recital Hall, Roselle Center for the Arts
- 8:30 – 9:00 p.m. **Shuttle to Courtyard Marriott**

FRIDAY, FEBRUARY 15 *(Science, Technology and Advanced Research Campus)*

- 8:30 – 9:00 a.m. **Shuttle to STAR Tower**
- 9:00 – 10:00 a.m. **Breakfast, Audion, STAR Tower**
- Partnership for Healthy Communities**
Rita Landgraf
Director of the Partnership for Healthy Communities, Professor of
Practice, College of Health Sciences, University of Delaware
- Sharing: How can TRUCEN support Campus/Community Partnerships*
- 10:00 – 10:15 a.m. **Break**
- 10:15 – 11:00 a.m. **Tour of STAR Campus**
- 11:00 a.m. – 1:00 p.m. **Reflection, Lunch, and Next Steps**
- Lunch** *(at noon)*
- Concluding Thoughts and Next Steps**
- 1:00 P.M. **Shuttle to Courtyard Marriott**



LYNN BLANCHARD

Director, Carolina Center for Public Service
University of North Carolina at Chapel Hill

Lynn Blanchard is the director of the Carolina Center for Public Service at the University of North Carolina at Chapel Hill. She received her master of public health and doctorate degrees from UNC's Gillings School of Global Public Health, where she also currently serves on the faculty in Health Behavior. After graduating from East Carolina University, she began her professional life as a public school teacher in Wake County, North Carolina. After graduate school she served as associate director of Family Support Network of North Carolina, held faculty appointments at UNC-Chapel Hill and the Pennsylvania State University, and directed an award winning community initiative in eastern Pennsylvania. Currently, she oversees the Carolina Center for Public Service, including the APPLES Service-Learning, Buckley Public Service Scholars and Thorp Faculty Engaged Scholars programs. She teaches the undergraduate course Philanthropy as a Tool for Social Change and chairs the Carolina Engagement Council. On the national front, she was co-director of Faculty for the Engaged Campus, an initiative of Community-Campus Partnerships for Health, and she served on the Executive Committee of the Council for Engagement and Outreach of the Association of Public and Land-grant Universities (APLU). In 2016 she was inducted into the National Academy of Community Engagement Scholarship and serves on their executive board.

Throughout her career, she has been a champion of the role higher education can play in addressing society's pressing issues and improving community through the concept of engaged teaching, research and service.



RENEE BROWN

Director, Center for Service Learning and
Civic Engagement
Michigan State University

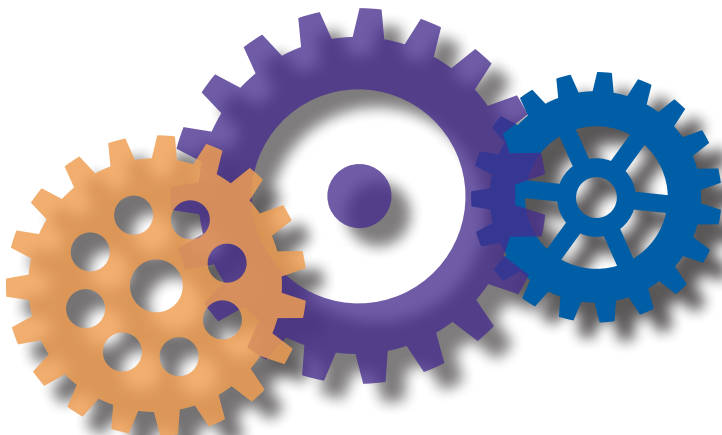
Renee (Zientek) Brown is the director of the Center for Service-Learning and Civic Engagement. Brown was the founding director of the Center for Service Learning and Student Volunteer Programs at the University of Michigan-Flint (UM-F). In her 10-year history with UM-F she was responsible for university outreach, alumni affairs, and corporate and foundation affairs. She served as a director, executive director, and assistant vice chancellor at UM-F. From 2010-2013 she served as executive director of the Michigan Campus Compact and senior director of civic engagement for the Michigan Nonprofit Association. In those roles, she was responsible for supporting 40 college presidents and campuses across the state of Michigan as well as leading a national college access and success initiative for Campus Compact. Her role with the Michigan Nonprofit Association was to facilitate partnerships focused on opportunities for lifelong engagement in Michigan, which included directional oversight of several large-scale national service (AmeriCorps) programs. She has a BA from the University of Michigan-Flint and an MA from the University of Michigan.



MARTHA BUELL

Professor, Department of Human Services and
Family Sciences;
Director, Delaware Institute for Excellence in
Early Childhood;
Past President, Faculty Senate
University of Delaware

Martha Buell is a Professor in the Department of Human Development and Family Sciences and serves as Director of the Delaware Institute for Excellence in Early Childhood and as Past President of the Faculty Senate. Her area of interest is teacher development and early childhood education, especially in the areas of language and literacy development. She teaches classes in early childhood curriculum, and her research focuses on factors that influence the professional development of early childhood teachers and child care providers. In the past she has worked on several projects examining the quality of child care, and how teacher education contributes to that quality.



LISA CHAMBERS

Associate Director,
Morgridge Center for Public Service
University of Wisconsin-Madison

Lisa Chambers serves as Associate Director of the Morgridge Center for Public Service at the University of Wisconsin-Madison. She provides oversight for the day-to-day administration of the Morgridge Center for Public Service. Previously, she spent nine years as the director of the Centre for Community Partners at the University of Toronto. Prior to her work at the University of Toronto, she served as the Executive Director of the Michigan Campus Compact. Earlier in her career she held student affairs positions at Kent State University and St. Norbert College. Lisa is originally from Madison.



JOHN ERNEST

Chair, Department of English
University of Delaware

John Ernest, Judge Hugh M. Morris Professor and Chair of the Department of English at the University of Delaware, is the author or editor of twelve books, including *Chaotic Justice: Rethinking African American Literary History* and *The Oxford Handbook of the African American Slave Narrative*. He has chaired the English Department since his arrival at UD in 2012. During that time, the English Department has revised its undergraduate and graduate programs, helped launch the award-winning Colored Conventions Project, and fostered a community devoted to interdisciplinary studies, digital humanities initiatives, and public engagement. Before arriving at the University of Delaware, he was the Eberly Family Distinguished Professor of American Literature at West Virginia University for seven years, and he taught for twelve years at the University of New Hampshire, where he received the Outstanding Assistant Professor Award (1997), the UNH Diversity Support Coalition's Positive Change Award (1998), the Jean Brierley Award for Excellence in Teaching (2003-2004), and the New Hampshire Excellence in Education Award for Higher Education (2004).



GEORGE IRVINE

Interim Associate Vice Provost, Division of
Professional and Continuing Studies;
Co-chair of the Council of Community
Engagement and Public Service Centers
University of Delaware

George has extensive experience building knowledge partnerships between universities and businesses/organizations in order to catalyze organizational and economic development. At the UD Lerner College of Business and Economics, George extended the college's research-based knowledge to the Delaware and Mid-Atlantic business community via customized and open-enrollment executive education programs. In prior positions at UD, UNC Chapel Hill and IIE, George managed international education and technical assistance projects in partnership with US government agencies (USAID, DOC, USDA, and the State Department) and corporate foundations.

George earned his PhD in Urban Affairs and Public Policy in May 2018 from the University of Delaware. His dissertation focused on the changing public identities of American research universities between 1975 and 2015. His teaching and research interests include research university publicness, international development public policy, corporate social responsibility and environmental policy. He has work and travel experience in twenty five (25) countries on four continents and is proficient in German and French.



HEATHER KELLY

Director of Institutional Research
University of Delaware

Heather Kelly is the Director of Institutional Research at the University of Delaware. She has served on the University's Carnegie Foundation for the Advancement of Teaching Elective Community Engagement Classification Task Force, Community Engagement Commission, and Campus Compact Council. She is currently a member of the Campus Compact Mid-Atlantic Assessment Working Group. Her areas of expertise include institutional effectiveness and faculty workload. She has published four chapters on the latter topic including a chapter in *The Handbook of Institutional Research*. She has taught graduate level courses on higher education topics. She serves as an Accreditation Liaison Officer and Evaluator for the Middle States Commission on Higher Education. She has served in leadership positions for the Association for Institutional Research and the North East Association for Institutional Research. She has degrees from the University of Delaware (Ed.D.), University of Pennsylvania (MS.Ed.), and Smith College (B.A.). She is also a graduate of the HERS (Higher Education Resource Services) Bryn Mawr Summer Institute.



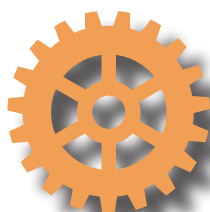
RITA LANDGRAF

Director of the Partnership for Healthy
Communities;
Professor of Practice College of Health
Sciences
University of Delaware

Rita Landgraf joined the University of Delaware's College of Health Sciences in early 2017 as professor of practice and distinguished health and social services administrator in residence. She also serves as director of the UD Partnership for Healthy Communities (PHC), a cross-college, cross-state initiative.

As Partnership Director, Rita's focus is concentrated on the social, economic, and environmental conditions that support and sustain healthy communities and the relationship of these conditions to a cost-effective healthcare system. PHC supports and grows these University relationships into full-scale, sustained, collective community-campus partnerships that achieve greater impact in Delaware and beyond. PHC also facilitates interdisciplinary scholarship, graduate and undergraduate programs, and collaborations across university units and with community institutions.

Prior to joining the faculty at UD, Rita served as Cabinet Secretary of the Delaware Department of Health and Social Services under Governor Jack Markell's administration. She managed one of the largest departments in Delaware's government, with an annual budget of more than \$2 billion.



ROBIN MORGAN

Provost
University of Delaware

Robin Morgan is the provost at the University of Delaware. She began her career at the University in 1985 as assistant professor in the Department of Animal and Food Sciences, became a full professor in 1991, and later held a joint faculty appointment with the Department of Biological Sciences. In 2001, she was named acting dean of the UD College of Agriculture and Natural Resources, a role she took over officially the following year. After 11 years as dean, she became the interim chair of the Department of Biological Sciences for two years before being named chair in 2016. She has served on a number of association boards and is currently a member of the Board of Trustees for Longwood Gardens. Dr. Morgan earned her bachelor's degree in biology from Meredith College and her Ph.D. in biology from The Johns Hopkins University. She also did post-doctoral research at the University of California at Berkeley.



LYNNETTE OVERBY

Deputy Director, Community Engagement Initiative
University of Delaware

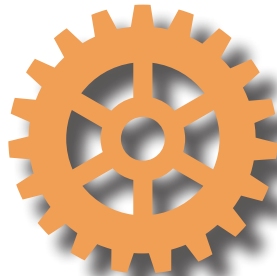
Lynnette Young Overby, Professor of Theatre and Deputy Director of the Community Engagement Initiative at the University of Delaware, has served many years as a dance teacher, researcher, choreographer and has held leadership positions in dance education at the local, national and international levels. She has contributed to the development of dance education standards in several states including Maryland, Washington DC, Michigan, and Delaware. She also served as one of 10 dance educators responsible for the development of the National Core Arts Standards. Overby's leadership roles have included serving as President of the National Dance Association and the Michigan Dance Council, with several board positions including Director of Publications, Dance Education Vice President and Director of Research. She currently serves as Director of Research for the dance and the Child international organization. As a founding Board Member of the National Dance Education Organization, Lynnette organized the 2004 National Conference with Loren Bucek, started a listserv for communications and established poster presentation sessions for the annual conferences. She is the author or editor of over 40 publications including 12 books. Recently, she received the 2018 Lifetime Achievement Award from the National Dance Education Organization.



MARK RIEGER

Dean and Director, College of Agriculture and
Natural Resources
University of Delaware

Mark Rieger is Dean and Director, College of Agriculture and Natural Resources at the University of Delaware. Prior to his arrival in August 2012, he served as Associate Dean of the College of Agricultural and Life Sciences at the University of Florida for 5 years, and Interim Dean of that college for 1 year. He spent 19 years at the University of Georgia as a Professor of Horticulture, teaching and performing research on carbohydrate metabolism, stress responses of crop plants, plant physiology, and sustainable agriculture. He received a BS degree from Penn State and completed MS and PhD degrees at Georgia and Florida, respectively. Mark began his second term as Dean in summer 2018.



ANDREW SELIGSOHN

President
Campus Compact

Andrew J. Seligsohn is president of Campus Compact, a national coalition of 1,100 colleges and universities dedicated to the public purposes of higher education. As president, Seligsohn has focused on strengthening Campus Compact's support for deep partnerships between campuses and communities through comprehensive campus planning. He is also leading efforts to expand Campus Compact's professional development and student civic leadership offerings.

Before joining Campus Compact in June of 2014, Seligsohn served as associate chancellor for civic engagement and strategic planning at Rutgers University–Camden, where he worked across the campus to develop the university's engagement infrastructure to maximize community impact and student learning. Seligsohn previously served as director of civic engagement learning in the Pace Center at Princeton University and as a faculty member in the Department of Political Science at Hartwick College. At Hartwick, Seligsohn also served as the elected chair of the faculty.

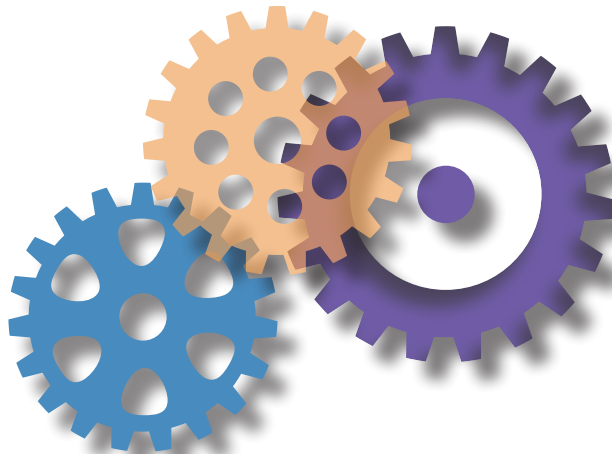
Seligsohn has published articles and chapters on higher education engagement, student political engagement, constitutional law, political theory, and urban politics. Seligsohn is a member of the Policy Council of the Service Year Alliance and the National Advisory Board for the ALL IN Campus Democracy Challenge. Seligsohn holds a Ph.D. in political science from the University of Minnesota and a B.A. in modern intellectual history from Williams College.



SUSAN SERRA

Assistant Director of Service Learning,
Community Engagement Initiative
University of Delaware

Susan Serra serves as Assistant Director of Service Learning for the Community Engagement Initiative. She founded the Office of Service Learning in 2004 and developed the University of Delaware Alternative Break Program. As a member of the Community Engagement Initiative she worked with the Faculty Senate to develop the Community Engagement Scholars course of study. Serra coordinates the CEI Summer service immersion programs and served on the steering committee of the UD Carnegie Community Engagement Elective Classification Taskforce. She earned her MA in Liberal Studies from the University of Delaware.



LUKE TERRA

Associate Director, Haas Center for Public Service
Stanford University

Luke Terra directs the Community Engaged Learning and Research (CELR) division at the Haas Center for Public Service. The CELR team supports faculty and students in connecting teaching and research to broader public concerns through service-learning courses, community-engaged internships, and community-based research.

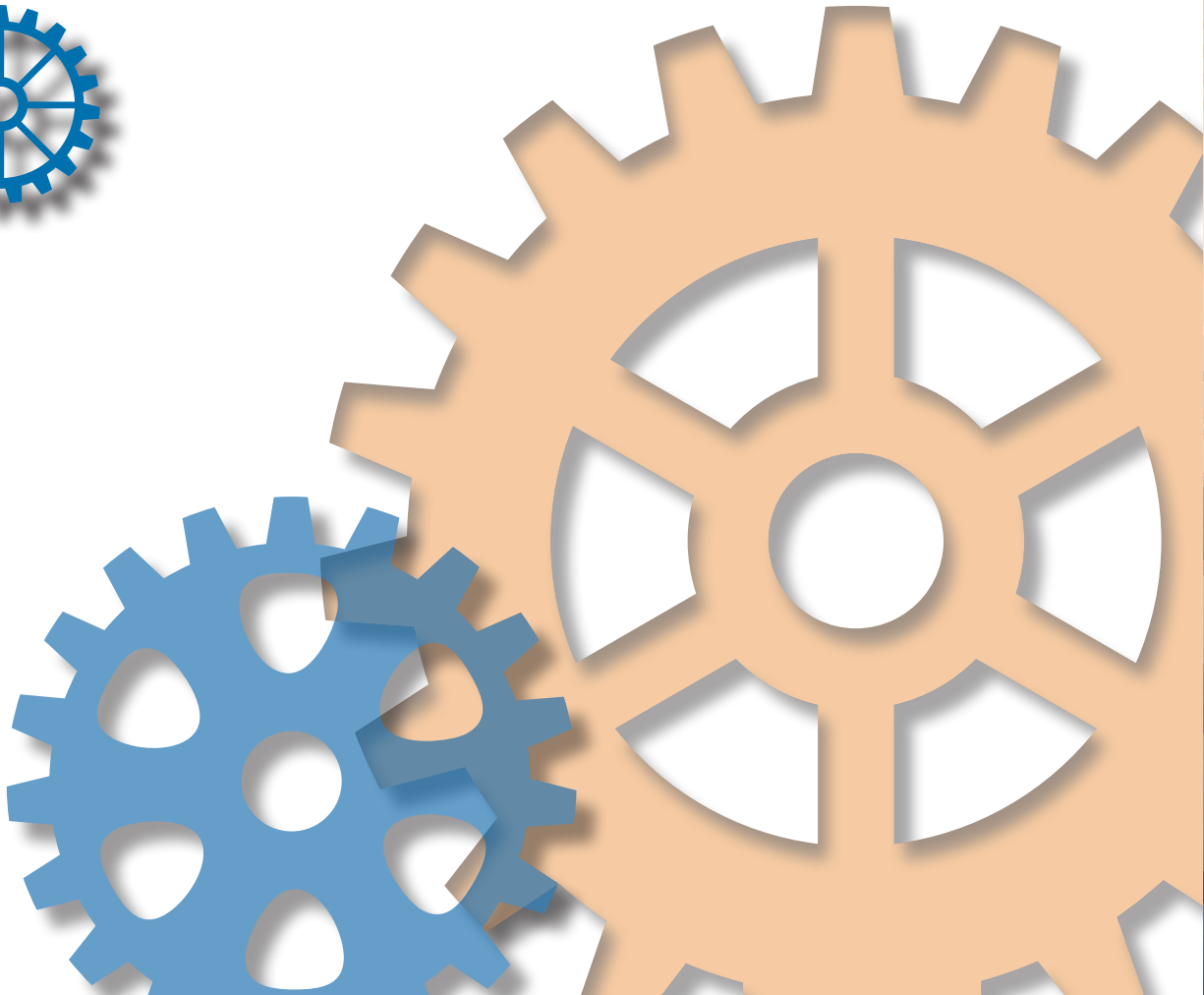
Dr. Terra received his doctorate in history of education and international comparative education at the Stanford Graduate School of Education. His research focuses on teaching and learning in secondary history and civics classrooms. His dissertation explored the development of a common history curriculum in Northern Ireland, and the challenges of teaching history in a post-conflict context. Prior to his doctoral work, Dr. Terra managed international partnerships for the Center for Civic Education, supporting civic educators in Eastern Europe, the Balkans, Malawi, India and Indonesia. He previously served as assistant director of the Center for Service and Learning at Colorado College, where he worked with student service organizations, community organizations, and faculty interested in community engagement.



MICHAEL VAUGHAN

Associate Dean, College of Engineering
University of Delaware

Dr. Michael L. Vaughan is Associate Dean and holds a secondary faculty appointment at the University of Delaware, College of Engineering. In this role, he is responsible for the College of Engineering academic affairs enterprise. Dr. Vaughan manages the College of Engineering academic and educational support processes by developing and implementing policies, programs and interconnections to enhance the College ability to foster successful outcomes. On and off campus, Dr. Vaughan is involved in many committees, professional associations and boards. For example, Dr. Vaughan is a former President of the Board of the National GEM Consortium and past Chairman of the GEM Investment Committee. In addition, Dr. Vaughan is the Co-chair of the UD Campus Compact Council. Dr. Vaughan received both his BS and MS in Electrical Engineering from North Carolina A&T State University and a Ph.D. in Civil Engineering from the University of Delaware.



2019 TRUCEN PARTICIPANTS

Neeraja Aravamudan

Associate Director for Teaching & Research
University of Michigan
aneeraja@umich.edu

Margaret Barrett

Associate Director
Carolina Center for Public Service
University of North Carolina at Chapel Hill
margaret.barrett@unc.edu

Lynn Blanchard

Director
Carolina Center for Public Service
University of North Carolina at Chapel Hill
blanchard@unc.edu

Jay Brockman

Director
Center for Civic Innovation
University of Notre Dame
jbb@nd.edu

Renee Brown

Director
Center for Service-Learning & Civic Engagement
Michigan State University
rcbrown@msu.edu

Lisa Chambers

Associate Director
Morgridge Center for Public Service
University of Wisconsin-Madison
lisa.chambers@wisc.edu

Linda Dixon

Associate Director
University of Kansas
ldixon@ku.edu

Samantha Graham

Innovative Engagement Program Manager
North Carolina State University
sjgraha2@ncsu.edu

Suchitra Gururaj

Assistant Vice President
Community Engagement and Economic Development
The University of Texas at Austin
suchi.gururaj@austin.utexas.edu

Bridget Healey

Senior Program Manager
Watts College of Public Service & Community Solutions
Arizona State University
Bridget.Healey@asu.edu

Katie Houck

Associate Director
Tulane University
khouck@tulane.edu

Clayton Hurd

Director of Professional Learning
Campus Compact
churd@compact.org

Michaelann Jundt

Associate Dean
Undergraduate Academic Affairs
University of Washington-Seattle
mjundt@uw.edu

Johannes Kleiner

Associate Director
Civic and Community Engagement
Emory University
jkleine@emory.edu

Joseph Krupczynski

Director
Civic Engagement and Service-Learning
University of Massachusetts-Amherst
jkrup@umass.edu

Stephanie Kurtzman

Director
Gephardt Institute for Civic & Community Engagement
Washington University in St. Louis
stephanie.kurtzman@wustl.edu

Katherine McCormick

Professor
Department of Early Childhood, Special Education and Rehabilitation Counseling
University of Kentucky
kmcco2@uky.edu

Misti McKeehen

Executive Director
Center for Social Concern
Johns Hopkins University
misti@jhu.edu

Lynnette Overby

Deputy Director
Community Engagement Initiative
University of Delaware
overbyl@udel.edu

Jennifer Rosales

Director of Research and Evaluation
Georgetown University
jr1688@georgetown.edu

Shalom Staub

Director
Center for Community Learning
UCLA
sstaub@college.ucla.edu

Andrew Seligsohn

President
Campus Compact
ajs@compact.org

Susan Serra

Assistant Director of Service Learning
University of Delaware
serra@udel.edu

Linda Snetselaar

Associate Provost of Outreach and Engagement
University of Iowa
linda-snetselaar@uiowa.edu

Luke Terra

Associate Director
Haas Center for Public Service
Stanford University
lterra@stanford.edu

Nancy Thomas

Director
Institute for Democracy & Higher Education
Tufts University
Nancy.Thomas@tufts.edu

Trisha Thorne

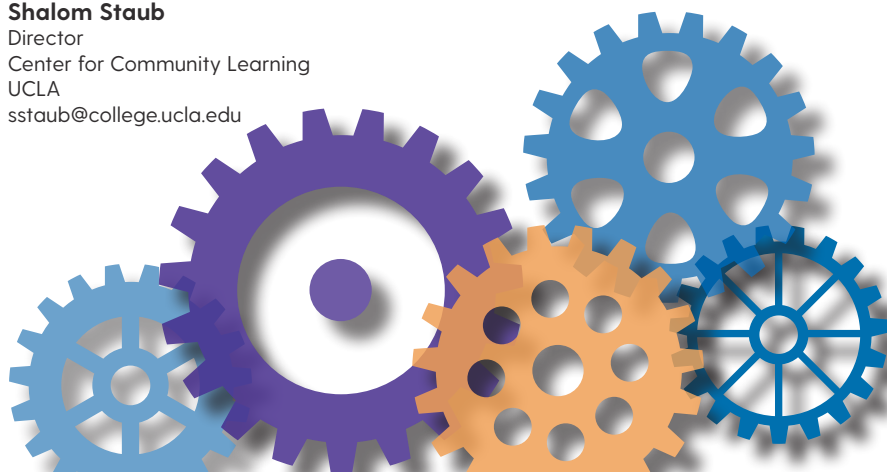
Director
Program for Community-Engaged Scholarship
Princeton University
tthorne@princeton.edu

Earlise Ward

Faculty Director
Morgridge Center for Public Service
University of Wisconsin-Madison
ecward@wisc.edu

David Weerts

Faculty Director
Office for Public Engagement
University of Minnesota- Twin Cities
dweerts@umn.edu



NOTES



NOTES







UNIVERSITY OF DELAWARE

**COMMUNITY ENGAGEMENT
INITIATIVE**

